

Mytton Grove

TIPTON



SOUL ESTATES
SALES & LETTINGS

The finer details

- 🏠 MODERN PURPOSE BUILT 1 BEDROOM SECOND-FLOOR APARTMENT
- 🏠 FAMILY BATHROOM
- 🏠 OFF-ROAD PARKING
- 🏠 COMMUNAL GARDENS & CANAL VIEWS
- 🏠 SECURITY ENTRANCE DOORS
- 🏠 GOOD SIZED BEDROOM
- 🏠 FITTED KITCHEN
- 🏠 ESTIMATED REMAINING LEASE – 101 years
- 🏠 SERVICE CHARGE - £2,000 PA
- 🏠 GROUND RENT - £100 PA

Description

Soul Estates are proud to present this modern purpose-built 1 bedroom second-floor apartment For Sale. The Apartment is situated in a very popular area of Tipton, with good schools close by. The house is close to Mad o Rourke's Pie Factory, Dudley Port train station and other local amenities.

The property offers an entrance leading into the hallway with rooms going off to the spacious lounge with a Juliette balcony, fitted kitchen, family bathroom and a good-sized bedroom. Family kitchen with a range of wall and base units to match, splashback tiling and integrated Electric Oven and Hob. The property also benefits from double glazing and allocated parking and security entrance doors.



LOUNGE



BEDROOM

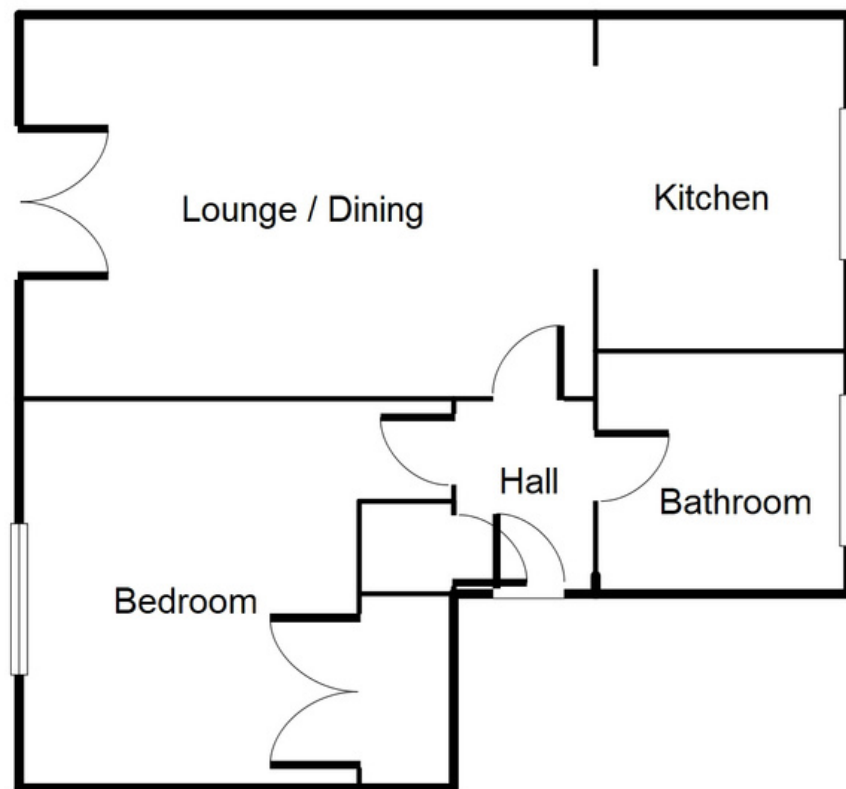


KITCHEN



BATHROOM

Second Floor



This floorplan is just an example, this is not to scale
Please see description for exact room sizes.
(c) Soul Estates

FLOOR PLAN

Mytton Grove

TIPTON

CONTACT US

Soul Estates
20 Great Bridge
Tipton
DY4 7HA

0121 647 6779

www.soulestates.co.uk



SOUL ESTATES
SALES & LETTINGS

